



Features :

- Three kinds of connection type : (1) hose connection (2) pipe taper male thread (3) pipe taper female thread.
- Apply vortex theorem, no moving parts in construction, can sustain long life.
- No need of coolant and electricity, just by high speed circular flow compressed air generating cool air and hot air (dia.1). Use cool air in cool-down work, for example spot welding, adhering quick cool....
- Even supply 40°C compressed air, it still can produce comparatively cool jet air. By air consumption, you can adjust cool air temperature or output volume to suit the need.

Order example :

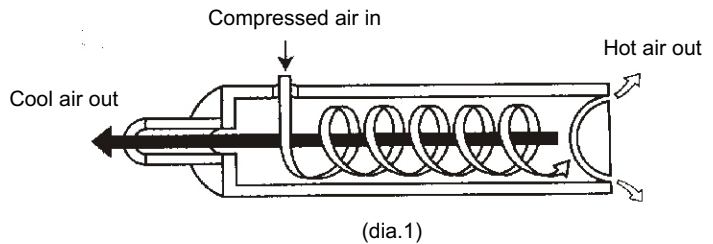
MJC - 150 - A

Model

MJC-150
MJC-300

Cool air output connection

blank : hose connection thread
A: pipe taper male thread
B: pipe taper female thread



Specification:

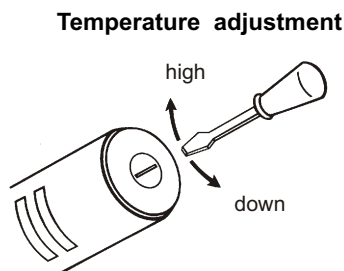
Model	MJC-150	MJC-300
Medium	Air	
Operating pressure range	2~5 kgf/cm ²	
Proof pressure	10 kgf/cm ²	
Air consumption	150 ℓ / min	300 ℓ / min
Cool air output	Approximately air consumption 50~80%	
Weight (kgf)	0.2	0.4

Cool air adjustment :

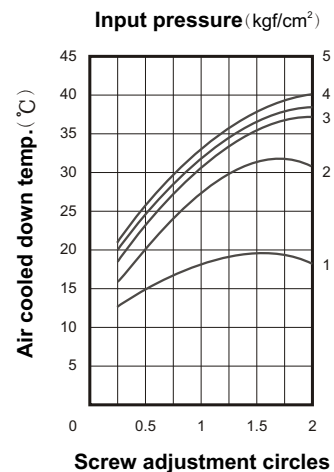
- Please apply screw driver at body end (hot air part) for adjustment.
- Loosen adjustment screw to make cool air temperature down and cool air output volume down. On the contrary, tighten adjustment screw to make cool air temperature high and cool air output volume high.
- When cool air temperature too low, cool air jet port might be frozen. Please refer to below freezing point temperature. (by sheet 1, dia. 2)

(sheet 1)

Supply air temp.	Cool air freezing point temp.
0°C	-20°C
10°C	-14°C
20°C	-8°C
30°C	-2°C



Temperature characteristic (dia.2)

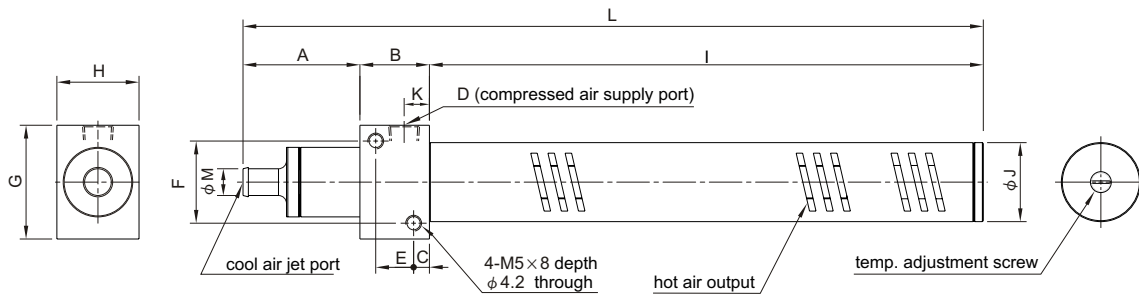


MJC Dimension / Application



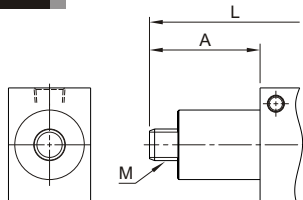
JET COOLER

Standard type



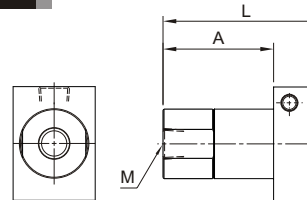
Code Model	A	B	C	D	E	F	G	H	I	J	K	L	M
MJC-150	37	22	5	PT 1/8	12	26	36	26	174	25	8	233	8
MJC-300	46	28	5	PT 1/8	18	34	44	32	250	30	11.5	324	10

A type



Code Model	A	L	M
MJC-150	35	231	PT 1/8
MJC-300	42	320	PT 1/4

B type



Code Model	A	L	M
MJC-150	35	231	PT 1/8
MJC-300	42	320	PT 1/4

Application :

<p>■ Plastic machining cool</p>	<p>■ Spot welding cool</p>	<p>■ Monitoring camera case cool and dust-proof inside control box</p>
<p>■ Wire cut harden</p>	<p>■ Adherent quick cool</p>	<p>■ Welding quick cool</p>